



Relax, we're the real experts
in solid hardwoods

Arnold Laver **TIMBER WORLD**
The essential tools for the trade



Arnold Laver Timber World – welcome to our hardwood collection

Hardwood is the ultimate versatile material, with applications ranging from exquisite veneers and furniture, through the world of musical instruments, to flooring, construction and boat-building. It is a material of real beauty, available in countless combinations of species, specifications and colours.

Our experience in hardwood, gained over decades of meeting the exacting requirements of companies like yours, is your guarantee of satisfaction. Whatever your hardwood requirements, we'll work with you to ensure that you get the most appropriate product at the best possible price.

At Arnold Laver Timber World, we carry what we believe to be one of the widest ranges in the UK and we pride ourselves on the high standards of our timber. We aim to be able to meet virtually any requirement from stock. When we can't we'll source it specially. We also offer a full machining service and can supply everything from simple lengths of timber to intricate mouldings.

When you choose us as your hardwood supplier, we see it as the start of a long-term relationship and we'll do everything within our power to earn your respect and retain your business.

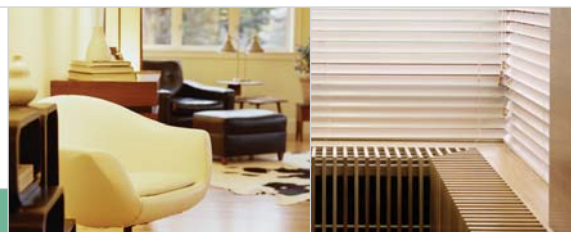
Hardwood Products

www.timberworld.co.uk



Hardwood Products

www.timberworld.co.uk



Ash American

(*Franxinus Spp.*)

25mm (1")
32mm (1 1/4")
38mm (1 1/2")
50mm (2")
63mm (2 1/2")
75mm (3")
100mm (4")



Used for coachwork, interior joinery, furniture, kitchen doors. Non-durable. Available in 4" and wider. Available in 9" and wider.

Kiln Dried/Square Edged/FAS. Strips available.

Beech Steamed

(*Fagus Sylvatica*)

25mm (1")
32mm (1 1/4")
38mm (1 1/2")
50mm (2")
63mm (2 1/2")
75mm (3")



Uniform pinkish colour, preferred in some interior joinery and shopfitting. Non-durable. Available in 4" and wider.

Kiln Dried/Steamed/Prime. Square Edged.

Beech Unsteamed

(*Fagus Sylvatica*)

25mm (1")
32mm (1 1/4")
38mm (1 1/2")
50mm (2")
63mm (2 1/2")
75mm (3")



Strong, straight grained with plain appearance, popular in furniture manufacturing, internal joinery, bank/ shopfitting, but no natural durability. Available in 4" and wider.

Kiln Dried/Prime. Square Edged.

Cedar Brazillian

(*Cedrela Spp.*)

25mm (1"),
32mm (1 1/4")
38mm (1 1/2")
50mm (2")
63mm (2 1/2")
75mm (3")
100mm (4")



Durable timber. Furniture, panelling joinery, boat building, light construction.

Kiln Dried/Square Edged/FAS. Limited availability.

Cherry American

(*Prunus Spp.*)

25mm (1")
32mm (1 1/4")
38mm (1 1/2")
50mm (2")
63mm (2 1/2")
75mm (3")
100mm (4")



Moderately durable. High class joinery, musical instruments, pattern making, cabinets etc. Available in 4" and wider.

Kiln Dried/Square Edged/FAS/Super Prime.

Idigbo (Emeri)

(*Terminalia Ivorensis*)

25mm (1")
32mm (1 1/4")
38mm (1 1/2")
50mm (2")
63mm (2 1/2")
75mm (3")
100mm (4")



Durable medium weight timber used in furniture, interior and exterior joinery. Timber stains and corrodes in contact with iron in exterior joinery. Available in 4" and wider.

Kiln Dried/Square Edged/FAS.

Iroko

(*Chlorophora Excelsa*)

25mm (1")
32mm (1 1/4")
38mm (1 1/2")
50mm (2")
63mm (2 1/2")
75mm (3")
100mm (4")



Very durable, attractive, strong timber alternative to teak in interior and exterior joinery, bench tops, laboratory equipment. Also boat building. Available in 4" and wider.

Kiln Dried/Square Edged/FAS.

Jelutong

(*Dyera Costulata*)

25mm (1")
32mm (1 1/4")
38mm (1 1/2")
50mm (2")
63mm (2 1/2")
75mm (3")
100mm (4")



Mostly pattern making because of its lightweight, easily worked, stable nature. Also used as core in fire check doors. Available in 6" and wider.

Kiln Dried/Square Edged/Select and Better.

Keruing

(*Dipterocarpus Spp.*)

25mm (1")
32mm (1 1/4")
38mm (1 1/2")
50mm (2")
63mm (2 1/2")
75mm (3")



Moderately durable, used mostly in vehicle body building, farm buildings, door and window sills. However it exudes resin if exposed to the sun.

Square Edged/Standard and Better. Also available in Halflap.

Mahogany West African

(*Khaya Ivorensis*)

25mm (1")
32mm (1 1/4")
38mm (1 1/2")
50mm (2")
63mm (2 1/2")
75mm (3")
100mm (4")



Medium weight, moderately durable timber, with good working properties and stability. Used in interior joinery. Available in 4" and wider.

Kiln Dried/Square Edged/FAS. Limited availability.

Maple Hard

(*Acer Saccharum*)

25mm (1"),
32mm (1 1/4")
38mm (1 1/2")
50mm (2")
63mm (2 1/2")
75mm (3")
100mm (4")



Non-durable. Flooring, musical instruments, joinery, furniture, sports goods. Available in 4" and wider.

Kiln Dried/Square Edged/FAS.

Meranti Dark Red

(*Shorea Spp*)

25mm (1")
32mm (1 1/4")
38mm (1 1/2")
50mm (2")
63mm (2 1/2")
75mm (3")
100mm (4")



Moderately durable, well suited to joinery and general construction. Furniture, internal framing and cladding. Available in 6" and wider. Also available in 9" and wider.

Kiln Dried/Square Edged/Select & Better.



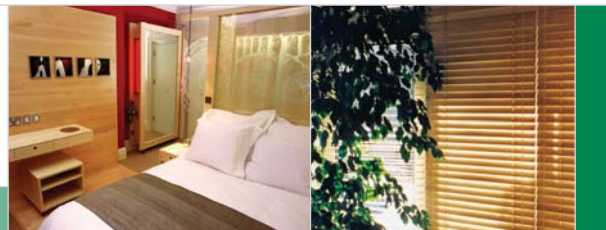
Hardwood Products

www.timberworld.co.uk



Hardwood Products

www.timberworld.co.uk



Oak American Red

(Quercus Spp.)

25mm (1")
32mm (1 1/4")
38mm (1 1/2")
50mm (2")
63mm (2 1/2")
75mm (3")



Used for flooring, furniture, interior joinery, veneer and any internal work as it is non-durable. Available in 4" and wider.

Kiln Dried/Square Edged/FAS.

Oak American White

(Quercus Spp.)

25mm (1")
32mm (1 1/4")
38mm (1 1/2")
50mm (2")
63mm (2 1/2")
75mm (3")
100mm (4")



Durable timber frequently used in reproduction of furniture, church work, and high quality interior, exterior joinery. Flooring, boats, barrels. Available in 4" and wider also in 9" and wider.

Kiln Dried/Square Edged/FAS/Super Prime.

Oak European

(Quercus Spp.)

25mm (1")
32mm (1 1/4")
38mm (1 1/2")
50mm (2")
63mm (2 1/2")
80mm (3 1/4")
100mm (4")



This durable wood is used for internal and external work including boat building, high class joinery, coffins, flooring and ecclesiastical work. Available in 4" and wider.

Kiln Dried/Square Edged/Prime Quality.

Obeche

(Triplochiton Scleroxylon)

25mm (1")
32mm (1 1/4")
38mm (1 1/2")
50mm (2")



Very stable, light timber, with no natural durability; used for mouldings, cabinet work and specialist work in organs. Available in 4" and wider.

Kiln Dried/Square Edged/FAS.

Sapele

(Entandrophragma Cylindricum)

25mm (1")
32mm (1 1/4")
38mm (1 1/2")
50mm (2")
63mm (2 1/2")
75mm (3")
100mm (4")



Moderately durable timber with pleasing appearance used in furniture, interior, exterior joinery, bank and shopfitting. Available in 6" and wider. Dimension stock available.

Kiln Dried/Square Edged/FAS.

Tulipwood

(Liriodendron Tulipifera)

25mm (1")
32mm (1 1/4")
38mm (1 1/2")
50mm (2")
63mm (2 1/2")
75mm (3")
100mm (4")



Even texture and grain makes this wood ideal for light construction, interior fittings and mouldings. Stains very well to resemble other commercial hardwoods. Available in 4" and wider. Also in 10" and wider.

Kiln Dried/Square Edged/FAS.

Utile Sipo

(Entandrophragma Utile)

25mm (1")
32mm (1 1/4")
38mm (1 1/2")
50mm (2")
63mm (2 1/2")
75mm (3")
100mm (4")



This species is a very popular durable hardwood often used in high class interior fit-outs or exterior joinery such as high street banks or within shopfitting projects. Available in 4" and wider.

Kiln Dried/Square Edged/FAS.

Walnut American Black

(Juglans Nigra)

25mm (1")
32mm (1 1/4")
38mm (1 1/2")
50mm (2")
63mm (2 1/2")
75mm (3")



This moderately durable strong and easily worked timber finishes well and takes an excellent polish. It is used for furniture, cabinets, gun stocks, musical instruments and decorative veneer. Available in 4" and wider.

Kiln Dried/Square Edged/FAS.

Wenge

(Milletia Laurentii)

25mm (1")
38mm (1 1/2")
50mm (2")



Durable and easy to work. Best suited to flooring, veneer and turning although it is also used for furniture. Available in 4" and wider.

Kiln Dried/Square Edged/FAS.



Setting the standard for responsible forestry management.

All European and some North American Hardwood is either FSC, PEFC or SFI certified. This is our guarantee of a sustainable quality hardwood to you. In addition, all our Meranti is MTCC certified. We can also offer to order, engineered hardwood sections in Oak and Sapele e.g. Framing sections and stair strings.

Hardwood Products

www.timberworld.co.uk



Hardwood Products

www.timberworld.co.uk



Timber World Branches

Birmingham*

Dudley Road, Oldbury, West Midlands B69 3DA
Tel: 0121 552 7788 Fax: 0121 544 7186
sales@birmingham.timberworld.co.uk

Bradford*

Manningham Sawmills,
Canal Road, Bradford BD2 1AR
Tel: 01274 732861 Fax: 01274 737060
sales@bradford.timberworld.co.uk

Chesterfield

Brimington Road, Chesterfield S41 7UW
Tel: 01246 271717 Fax: 01246 272255
sales@chesterfield.timberworld.co.uk

Hull*

Crowle Street, Hull, HU9 1RH
Tel: 01482 324525 Fax: 01482 216478
sales@hull.timberworld.co.uk

Kidderminster

Firs Trading Estate, Oldington Lane,
Kidderminster DY11 7QN
Tel: 01562 66557 Fax: 01562 864557
sales@kidderminster.timberworld.co.uk

Leeds*

Pontefract Road, Stourton, Leeds LS10 1SW
Tel: 0113 270 4086 Fax: 0113 272 3833
sales@leeds.timberworld.co.uk

Manchester*

Timber Terminal, Liverpool Road,
Cadishead, Manchester M44 5BZ
Tel: 0161 777 9000 Fax: 0161 777 9007
sales@manchester.timberworld.co.uk

North East*

Riverside Sawmills, Wagonway Road,
Hebburn NE31 1SP
Tel: 0191 428 6666 Fax: 0191 428 6622
sales@northeast.timberworld.co.uk

Reading*

Basingstoke Road, Reading RG2 0QN
Tel: 0118 975 1100 Fax: 0118 975 1900
sales@reading.timberworld.co.uk

Sheffield Central Call Collect

Chesterfield Road, Sheffield S8 0TW
Tel: 0114 255 7341 Fax: 0114 292 3660

Sheffield Mosborough*

Olympic Sawmills, Oxclose Park Road North,
Sheffield S20 8GN
Tel: 0114 276 4700 Fax: 0114 276 4701
sales@sheffield.timberworld.co.uk

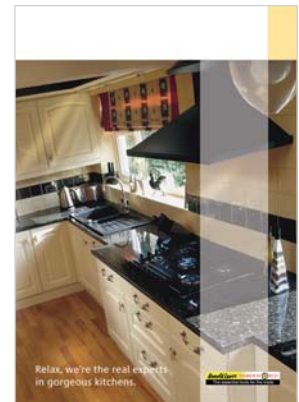
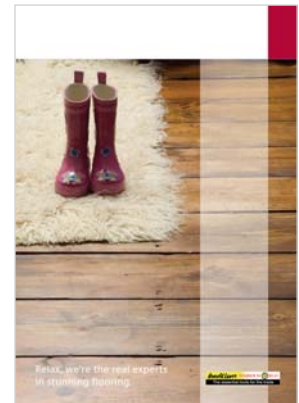
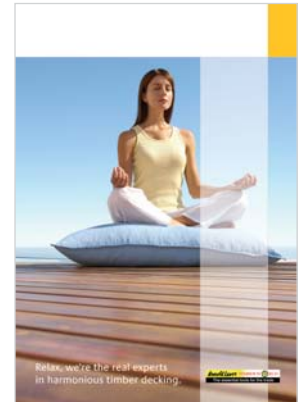
Beecrofts

94 Garnett Street, Bradford BD3 9HB
Tel: 01274 725 276 Fax: 01274 767 111
sales@beecrofts.timberworld.co.uk

*COC Certified



Setting the standard for responsible forestry management.



We all have a responsibility to the environment. At Arnold Laver Timber World we are committed to protecting the environment. We strongly believe it is our corporate and social responsibility to preserve world forests and promote effective forestry management. We have accepted the principles of sourcing materials from legal, sustainable, well managed forests and mills. All Arnold Laver Timber World branches in the UK have Chain of Custody implemented, independently evaluated and certified, to provide our customers with environmental assurances.