

Sawn Timber Guide



Your definitive guide to hardwoods and clear softwoods from the UK's leading timber supplier.

 **TIMBMET**

Everything wood should be

“ It’s unwise to pay too much, but it’s unwise to pay too little. When you pay too much you lose a little money, that is all. When you pay too little sometimes you lose everything.”

John Ruskin (1819-1900)

Of course price is important, which is why we strive to keep ours as competitive as possible. But we know quality of product is just as critical to our customers, so while we aren’t always the cheapest, we do offer the best value.

Value can come from our selected sawn service, which ensures you get exactly what you need for your specific cutting requirements, or through our popular Pack Deals, which offer substantial savings while still ensuring you know exactly what you’re getting.

Nobody can afford to risk buying twice, so talk to us. **We never compromise on quality.**



Company Overview	4
Responsible Business	5
Sawn Timber	6
• Selected Sawn	7
• Pack Deal	8
• Manufactured Timber	9
Hardwoods	11
Clear Softwoods	25



Company Overview

Timbmet has one of Europe's most extensive product ranges that include certified hardwoods, quality clear softwoods, panels, flooring, doors, window components, cladding, decking, manufacturing services, highly engineered timber components and innovative timber products sourced from around the world.

As a service driven organisation our sales team undergoes regular training so their knowledge on our products, services and offers is completely up-to-date. Our expertise and imagination enables us to provide intelligent solutions to the most complex, specialist challenges. In addition, our unique offering of a full range of in-house machining and manufacturing services mean we can add more value to your products.

With ten distribution warehouses and our vehicles making over 400 deliveries a day, we are ideally positioned to deliver nationwide within 48 hours. We are also able to combine products for one easy delivery to your location, making your business easy to manage.

TIMBMET ARE MEMBERS OF;



Responsible Business

We are a market leader in our commitment to environmental sustainability and responsible business solutions. As such, we pursue our commitment to responsible business through clear policies and action plans to meet our responsibilities as effectively as we can. Our environmental policy commits us to sourcing our wood products from legally and sustainably managed forest, reducing our carbon footprint and minimising our waste product.

For specific environmental, certified or sustainable timber requirements on a contract, we offer a range of full Chain of Custody certified products in FSC, PEFC, CSA, SFI, MTCC and Verified.

Certification Statements



The FSC logo identifies products which contain wood from responsibly managed forests independently certified in accordance with the rules of the Forest Stewardship Council A.C. FSC Trademark © 1996 Forest Stewardship Council A.C. Timbmet Chain of Custody no. TT-COC-1063.



PEFC Trademark © Programme for the Endorsement of Forest Certification. Timbmet Chain of Custody no. TT-PEFC-0001.



Verified Progress™ products are independently confirmed to be fully traceable and from legally harvested forests where forest management practices are actively progressing to credible certification through the BM TRADA® Forest Products Chain of Custody Certification. Timbmet Chain of Custody no. BMT-COC-0001.



Chain of Custody guarantees for CSA, SFI and MTCC certified product are achieved through BM TRADA's Forest products Chain of Custody certification. Timbmet Chain of Custody no. BMT-COC-0001.



Sawn Timber

Timbmet offers one of the most comprehensive ranges of hardwoods and clear softwoods available in the UK. Our hardwood range encompasses temperate and tropical timbers from across the world, Ash through to Walnut and over 40 species in between. Our softwood range spans clear softwoods such as Douglas Fir and Western Red Cedar from Canada and North America through to Scandinavian Redwoods.

Selected Sawn

Your selected sawn orders are hand-picked by our skilled staff, some with over 30 years experience in the timber industry. Our range and volume of species means we can select to your specific cutting requirements to minimise waste. Just tell us the species of timber, thickness, length and width and our specialists will select the boards best suited to your needs. To make your job easier we can even provide the timber already machined to your specifications.

Alternatively, you could benefit from our lump sum price service. Here we give you a guaranteed fixed price for the timber you require eliminating the problem of unknown waste cost on projects. With this service your timber is selected to the same standards as the selection service with the added benefit of a fixed price.





Pack Deal

Pack Deal represents amazing value for money, and is a great way of cutting costs on large timber orders. We hold in stock an unrivalled range of more than 3000 different packs of hardwood and clear softwood timber. Our new Pack Deal browser allows you to see the full length and width tallies of your packs before you place your order so you know exactly what you are buying. This pack specification allows you to find the pack that best suits your needs whilst also taking advantage of the most economical way to buy timber.

Details from the Pack Deal browser are currently available from our sales team but later this year you will be able to view this yourself on our website.

Pack Deal combines the advantage of a quick purchasing process, fast delivery service and an exceptional price. Our up-to-date list of Pack Deal timbers can be found on our website www.timbmet.com

Manufactured Timber

Our timber manufacturing services offer a wide range of solutions to your timber requirements. Ready to deliver from stock, a standard range of joinery products including skirting, architrave and dado rails are available in a choice of White Oak or Meranti. Alternatively our bespoke machining facilities enable us to provide special profiles and joinery components manufactured to your specific design. All our products can be finished by lacquering, painting, priming or even fire protection coatings. For even greater cost and time savings our skilled workforce can assemble joinery components ready for installation on-site.

So don't forget if you want any of these services, we can do it:

- standard mouldings
- bespoke profiles
- machined joinery components
- CNC machined products
- a fully assembled unit for installation
- a finishing service – lacquering, painting, priming and fire protection coatings



Choose from our wide range
of veneered boards to
complement your hardwoods.



Crown Cut White Ash



Quarter Cut White Ash



Steamed Beech



White Beech



Crown Cut Cherry



Crown Cut Maple



Crown Cut White Oak



Quarter Cut White Oak



Crown Cut Red Oak



Crown Cut Sapele



Quarter Cut Sapele



Wenge



Pine

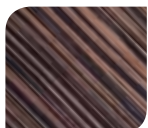


Crown Cut Teak



American Black Walnut

Engineered Veneers



Ebony



Wenge



Zebrano

For more information email
marketing@timbmet.com to request our
comprehensive panel product and door guide,
or visit www.timbmet.com to find out more.

TIMBMET

Everything wood should be

Hardwoods





ASH, AMERICAN



Genetic specific name: *Faxinus* spp
Geographical area: North America
Durability: non-durable
Appearance: white to pale yellow, bold and straight grain with medium texture
Sawn: square-edged, FAS
Drying: kiln-dried
Spec: 2.4m & longer, 100mm & wider
Weight: 660kg/m³ average
Uses: internal joinery, flooring, tool handles



ASH, ENGLISH

Genetic specific name: *Faxinus excelsior*
Geographical area: United Kingdom
Durability: non-durable
Appearance: white turning to pale biscuit, typically straight grain with medium texture
Sawn: log-sawn
Drying: kiln-dried
Spec: 2.1m & longer, 100mm & wider
Weight: 690kg/m³ average
Uses: joinery, furniture, sports goods



BEECH, STEAMED



Genetic specific name: *Fagus sylvatica*
Geographical area: Central Europe and United Kingdom
Durability: non-durable
Appearance: reddish-brown, deeper shade after steaming, typically straight grain with fine even texture
Sawn: square-edged, FAS
Drying: kiln-dried
Spec: 2.1m & longer, 100mm & wider
Weight: 675kg/m³ average
Uses: joinery, furniture, flooring



BEECH, UNSTEAMED



Genetic specific name: *Fagus sylvatica*
Geographical area: Central Europe and United Kingdom
Durability: non-durable
Appearance: creamy reddish-brown, typically straight grain with fine even texture
Sawn: square-edged, FAS
Drying: kiln-dried
Spec: 2.1m & longer, 100mm & wider
Weight: 675kg/m³ average
Uses: turnery, furniture, domestic woodware, flooring



BEECH, COLOUR NO DEFECT



Genetic specific name: *Fagus sylvatica*

Geographical area: Central Europe and United Kingdom

Durability: non-durable

Appearance: creamy reddish-brown, typically straight grain with fine even texture

Sawn: square-edged, FAS

Drying: kiln-dried

Spec: 2.1m & longer, 100mm & wider

Weight: 675kg/m³ average

Uses: internal use only for a paint or stain finish



CHERRY, AMERICAN



Genetic specific name: *Prunus serotina*

Geographical area: North America

Durability: moderately durable

Appearance: reddish-brown to deep red, fine, straight, close and narrow grain with fine, close and even texture

Sawn: square-edged, FAS

Drying: kiln-dried

Spec: 1.8m & longer, 100mm & wider

Weight: 578kg/m³ average

Uses: furniture, joinery, kitchen cabinets



IDIGBO



Genetic specific name: *Terminalia ivorensis*

Geographical area: Western Africa

Durability: durable

Appearance: yellow to yellow-brown, generally straight but occasionally irregular or interlocking grain with medium to coarse texture

Sawn: square-edged, FAS

Drying: kiln-dried

Spec: 1.8m & longer, 100mm & wider

Weight: 545kg/m³ average

Uses: furniture, interior and exterior joinery



IROKO



Genetic specific name: *Chlorophora excelsa*

Geographical area: Western Africa

Durability: very durable

Appearance: light yellow to dark golden brown, interlocked and typically irregular grain with fine and even texture

Sawn: square-edged, FAS

Drying: kiln-dried

Spec: 1.8m & longer, 100mm & wider

Weight: 642kg/m³ average

Uses: interior and exterior joinery, boat building, constructional work



MAPLE, HARD ROCK



Genetic specific name: *Acer saccharum*

Geographical area: North America

Durability: non-durable

Appearance: pale to dark reddish-brown, usually straight but sometimes wavy grain with coarse but even texture

Sawn: square-edged, FAS, no 1, no 1 and 2 white

Drying: kiln-dried

Spec: 1.8m & longer, 100mm & wider

Weight: 720kg/m³ average

Uses: joinery, furniture, kitchen cabinets, flooring



MERANTI, DARK RED



Genetic specific name: *Shorea spp*

Geographical area: Far East

Durability: moderately durable

Appearance: dark brown to deep red, typically interlocked grain with coarse texture

Sawn: square-edged, FAS

Drying: kiln-dried

Spec: 2.4m & longer, 150mm & wider

Weight: 690kg/m³ average

Uses: joinery



OAK, AMERICAN RED



Genetic specific name: *Quercus rubra*

Geographical area: North America

Durability: non-durable

Appearance: pink to pale reddish-brown, straight and open grain with medium to coarse texture

Sawn: square-edged FAS

Drying: kiln-dried

Spec: 1.8m & longer, 100mm & wider

Weight: 770kg/m³ average

Uses: interior joinery, furniture, kitchen cabinets



OAK, AMERICAN WHITE



Genetic specific name: *Quercus spp*

Geographical area: North America

Durability: moderately durable

Appearance: light tan to dark brown, usually straight and open grain with medium to coarse texture

Sawn: square-edged FAS

Drying: kiln-dried

Spec: 1.8m & longer, 100mm & wider

Weight: 750kg/m³ average

Uses: joinery, furniture, shopfitting, flooring



OAK, EUROPEAN



Genetic specific name: *Quercus robur*

Geographical area: Europe

Durability: moderately durable

Appearance: light brown with a golden hue, usually straight grain but can be wavy with medium to coarse texture

Sawn: square-edged and log-sawn

Drying: air-dried and kiln-dried

Spec: 1.8m & longer, 100mm & wider

Weight: 720kg/m³ average

Uses: joinery, furniture, flooring, cladding



POPLAR



Genetic specific name: *Liriodendron tulipifera*

Geographical area: North America

Durability: non-durable

Appearance: variable in colour from cream to olive green to brown, straight grain with even and fine texture

Sawn: square-edged

Drying: kiln-dried

Spec: 1.8m & longer, 100mm & wider

Weight: 510kg/m³ average

Uses: interior joinery, furniture



SAPELE



Genetic specific name: *Entandophragma cylindricum*

Geographical area: West Africa

Durability: moderately durable

Appearance: pinkish brown to reddish copper-brown, moderately interlocked and sometimes wavy grain with fine texture

Sawn: square-edged FAS

Drying: kiln-dried and fresh-sawn

Spec: 1.8m & longer, 100mm & wider

Weight: 620kg/m³ average

Uses: joinery, furniture, shopfitting



TEAK



Genetic specific name: *Tectona grandis*

Geographical area: Asia, Central Africa & Central America

Durability: very durable

Appearance: golden brown darkening to rich brown, generally straight to wavy grain with coarse texture

Sawn: square-edged & FEQ

Drying: kiln-dried and fresh-sawn

Spec: wide range of sawn boards and decking

Weight: 640 kg/m³ average

Uses: marine (especially decking), furniture, joinery



UTILE



Genetic specific name: *Entandrophragma utile*

Geographical area: West Africa

Durability: durable

Appearance: pink-brown to deep red-brown, broadly interlocked grain with fine to medium even texture

Sawn: square-edged FAS

Drying: kiln-dried

Spec: 1.8m & longer, 100mm & wider

Weight: 660kg/m³ average

Uses: joinery, furniture, doors, windows



WALNUT, AMERICAN

Genetic specific name: *Juglans nigra*

Geographical area: North America

Durability: durable

Appearance: rich chocolate-brown to a purplish-black, straight grain but can be wavy with fine and even but coarse texture

Sawn: square-edged FAS

Drying: kiln-dried

Spec: 1.8m & longer, 100mm & wider

Weight: 640kg/m³ average

Uses: joinery, furniture



WENGE

Genetic specific name: *Millattia laurentii*

Geographical area: Central Africa

Durability: moderately durable

Appearance: dark brown, fairly straight grain with medium to coarse texture

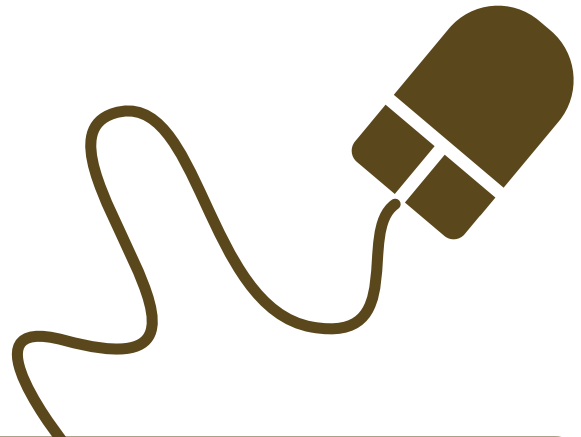
Sawn: square-edged

Drying: kiln-dried

Spec: 1.8m & longer, 100mm & wider

Weight: 882kg/m³ average

Uses: joinery, flooring, furniture



Find out about more species
and our up-to-date pack deal
offers on www.timbmet.com

BASSWOOD, AMERICAN

Genetic specific name: *Tilia americana*

Geographical area: North America

Durability: non-durable

Appearance: pale to reddish brown with darker streaks, straight grain with fine uniform texture

Sawn: square-edged FAS

Drying: kiln-dried

Spec: 1.8m & longer, 100mm & wider

Weight: 420kg/m³ average

Uses: carving, patterns, musical instruments

CHESTNUT, ENGLISH

Genetic specific name: *Castanea sativa*

Geographical area: United Kingdom

Durability: durable

Appearance: grayish-brown to brown, normally straight grain with fairly coarse texture

Sawn: log sawn, 1st quality

Drying: kiln dried

Spec: 1.8m & longer, 100mm & wider

Weight: 545kg/m³ average

Uses: joinery, furniture, kitchen cabinets

ELM, ENGLISH

Genetic specific name: *Ulmus* spp

Geographical area: United Kingdom

Durability: non-durable

Appearance: dull reddish brown, attractive cross and irregular grain with coarse texture

Sawn: log-sawn, 1st quality

Drying: kiln-dried, air-dried

Spec: 1.8m & longer, 150mm & wider

Weight: 545kg/m³ average

Uses: joinery, furniture

JELUTONG

Genetic specific name: *Dyera costulata*

Geographical area: Far East

Durability: non-durable

Appearance: creamy white to pale straw, straight grain with fine and even texture

Sawn: square-edged selects and better

Drying: kiln-dried

Spec: 1.8m & longer, 150mm & wider

Weight: 470kg/m³ average

Uses: pattern making, models

OBECHE

Genetic specific name: *Trichochiton scleroxylon*

Geographical area: West Africa

Durability: non-durable

Appearance: pale straw to yellow brown, interlocked grain with medium and uniform texture

Sawn: square-edged

Drying: kiln-dried

Spec: 1.8m & longer, 100mm & wider

Weight: 380kg/m³ average

Uses: interior joinery, models

SYCAMORE, ENGLISH

Genetic specific name: *Acer pseudoplatanus*

Geographical area: United Kingdom

Durability: perishable

Appearance: creamy to yellow white, usually straight grain with fine and even texture

Sawn: log-sawn, 1st quality

Drying: kiln-dried

Spec: 1.8m & longer, 100mm & wider

Weight: 610kg/m³ average

Uses: interior joinery, turning

We have the **experience, expertise** and **capability** to deal with large, bespoke orders through our own **manufacturing services** enabling us to deal with contractors and large manufacturing orders.

DECKING

Our 2009 stock of hardwood decking is **FSC Tali**. Alternative hardwood species are available to order along with bespoke designs and decking accessories.



CLADDING

Timbmet offers cladding solutions in a range of species including PEFC certified **Western Red Cedar** and **Larch**, along with high-performance plywood cladding from **Bruynzeel**.



SOLAR SHADING

Protect buildings from strong sunlight and rain with our range of bespoke shading systems.

Western Red Cedar solar shading is a popular choice because it satisfies both architect specification and customer demand for aesthetically pleasing materials.



TIMBMET

Everything wood should be

Clear Softwoods





CEDAR, WESTERN RED



Genetic specific name: *Thuja plicata*
Geographical area: North America
Durability: durable
Appearance: dark chocolate brown to salmon pink, typically straight and even grain with coarse texture
Sawn: square-edged, no 2 clear and better
Drying: air-dried
Spec: 1.8m and longer, 100mm and under
Weight: 390kg/m³ average
Uses: exterior and interior joinery, cladding



DOUGLAS FIR



Genetic specific name: *Pseudotsuga menziesii*
Geographical area: North America
Durability: moderately durable
Appearance: yellow to reddish brown colour, generally straight grain with medium and uniform texture
Sawn: square-edged, no 2 clear and better
Drying: kiln-dried
Spec: 1.8m and longer, 100mm and under
Weight: 530kg/m³ average
Uses: construction, exterior and interior joinery, furniture

LARCH, SIBERIAN



Genetic specific name: *Larix sibirica*
Geographical area: Russia
Durability: very durable
Appearance: pale yellow to orange brown, straight grain with a fine uniform texture
Sawn: square-edged, unsorted
Drying: kiln-dried
Spec: 1.8m and longer, 150mm and under
Weight: 750kg/m³ average
Uses: exterior and interior joinery, cladding

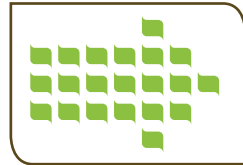
PINE, SOUTHERN YELLOW

Genetic specific name: *Pinus spp*
Geographical area: North America
Durability: moderately durable
Appearance: yellowish brown to reddish brown, short grain with coarse texture
Sawn: square-edged
Drying: kiln-dried
Spec: 1.8m and longer, 25-100mm
Weight: 658kg/m³ average
Uses: joinery



Timbmet Products

Timbmet offers one of the most extensive ranges of certified hardwoods, clear softwoods, panel products, flooring, decking, manufacturing services, door and window components and bespoke and highly engineered solutions in Europe.



Timbmet Innovation

We are dedicated to sourcing new and exciting timber products from around the world and applying our imagination and expertise to developing the application of wood through regular sector-specific focus groups.



Timbmet Intelligence

Our long-standing commitment to promoting sustainability, coupled with over 65 years experience in sourcing and working with wood, enables us to advise on some of the most progressive, demanding projects happening today.



Certified hardwoods



Clear softwoods



Panels



Flooring



Decking



Cladding



Manufacturing services



Door & window components



Timbmet Engineered Components **TEC**

Head Office

Kemp House, Chawley Park,
Cumnor Hill, Oxford OX2 9PH

South West Region

t: 01865 860350
f: 0800 085 9860

South East Region

t: 01865 860351
f: 0800 085 3748

Midlands & North Region

t: 01865 860352
f: 0800 085 9860

Scotland

t: 0141 440 0060
f: 0141 445 5736

Ireland

t: +44 (0) 1865 860620
f: +44 (0) 1865 860305

marketing@timbmet.com

Visit the 'Contact Us'
page of our website for
Local Support Centre
details for collections.

www.timbmet.com