

# TIMBER FRAMED HOTELS



ARC Engineers have carried out the structural design of timber frames to several hotels in recent years ranging in size and complexity from simple three storey buildings to multi-storey accommodation formed from steel and concrete framed podium substructures



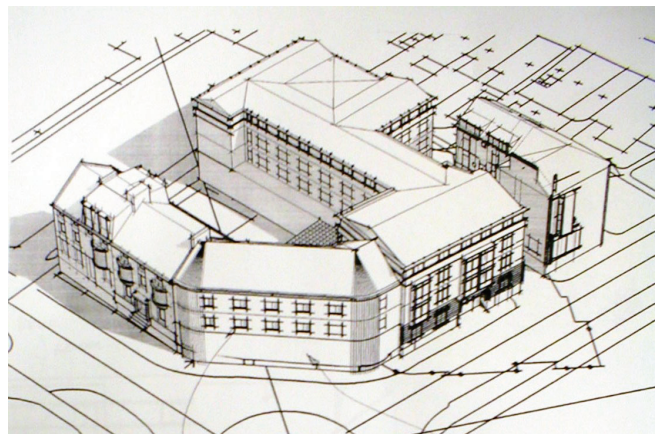
Bromborough Travelodge, Liverpool  
 Timber Frame Contractor - Shire Timber Structures  
 Image - Travelodge



Boothbys - Premier Inn, Scarborough  
 Timber Frame Contractor - Shire Timber Structures  
 Main Contractor - PDR Construction  
 Images - Hayes Associates (Architects)



Kempston Travelodge, Lancaster  
 Timber Frame Contractor - Shire Timber Structures  
 Main Contractor - Sisk UK Ltd  
 Image - Sisk UK Ltd



### PREMIER INN'S

- Medway Valley, Rochester (Spencer Jones Design Ltd)
- Fox Street, Preston (Shire Timber Structures)
- Lymington Road, Highcliffe (Spencer Jones Design Ltd)
- Boothbys, Scarborough (Shire Timber Structures)
- Wellingborough extension (Spencer Jones Design Ltd)
- Swanley Hotel & Beefeater (Spencer Jones Design Ltd)
- Aspley Wharf Huddersfield (Spencer Jones Design Ltd)
- Brackley Hatch Silverstone (Spencer Jones Design Ltd)

### TRAVELOGDES

- Bromborough, Liverpool (Shire Timber Structures)
- Kempston Lancaster (Shire Timber Structures)
- Pryme Street, Hull (Shire Timber Structures)
- Manchester Arena (Shire Timber Structures)
- River Street, Bolton (Shire Timber Structures)

## CONSULTING STRUCTURAL AND CIVIL ENGINEERING DESIGNERS



Director – Andrew Rimmington BEng CEng MInstuctE

Consultant – Robert Marshall CEng MInstuctE MICE

Registered in England Number 6365566

[www.arc-engineers.co.uk](http://www.arc-engineers.co.uk)

FF 05 CITY MILLS

PEEL STREET

LEEDS - LS27 8QL

TEL: 0113 253 3904

FAX: 0871 714 6751