



INtouch
WITH TIMBER
2010

Bigger, taller, better

Andrew Waugh
Waugh Thistleton Architects



INtouch
WITH TIMBER
2010



INtouch
WITH TIMBER
2010



INtouch
WITH TIMBER
2010


90 degrees




KLH Cross-laminated Panel



INtouch
WITH TIMBER
2010

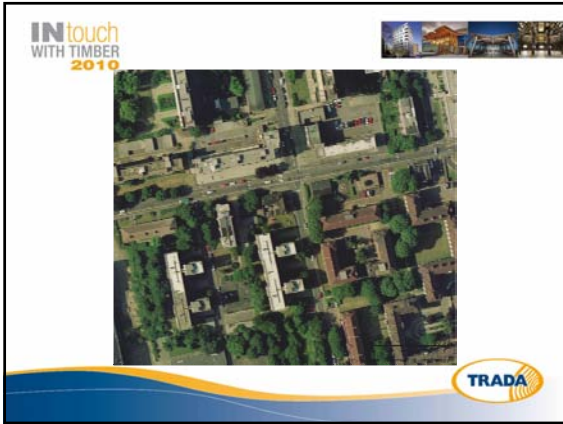


1 cubic metre of timber stores
0.8tonnes of Carbon



INtouch
WITH TIMBER
2010





IN touch WITH TIMBER 2010

Structural Form

Density	480kg/m ³	2400kg/m ³
Weight	300tonnes	1200tonnes
Programme	49 weeks	72 weeks

TRADA

IN touch WITH TIMBER 2010

- Honeycomb structure
- Rotated plans
- Load-bearing walls, floors and cores
- Tallest timber building in the world

TRADA



